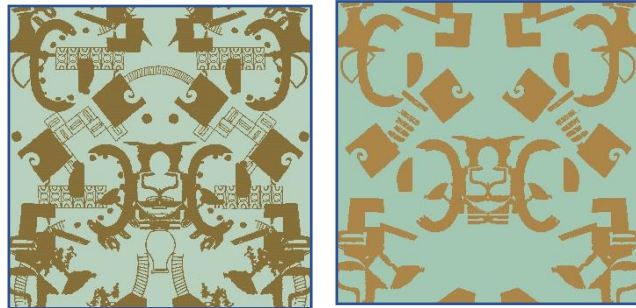


When is an A design not a B design?

Submitting the same design into different categories does **not** constitute 2 separate entries:



Making tweaks to a design by removing or adding elements does **not** constitute 2 separate entries:



Recolouring and moving the same elements around to create an alternative lay-out does **not** constitute 2 separate entries:



Can you spot the difference?
The one on the left is on a white background and the other is on a foil background. This does **not** constitute 2 separate entries:

